

An aerial photograph of a city skyline at sunset. The sun is low on the horizon, casting a warm, golden glow over the city. In the foreground, the back of a person wearing a blue beanie and a dark jacket is visible, looking out over the city. The city buildings are silhouetted against the bright sky, and a road or highway runs through the middle of the city.

# Supportive Reentry Network Collaborative

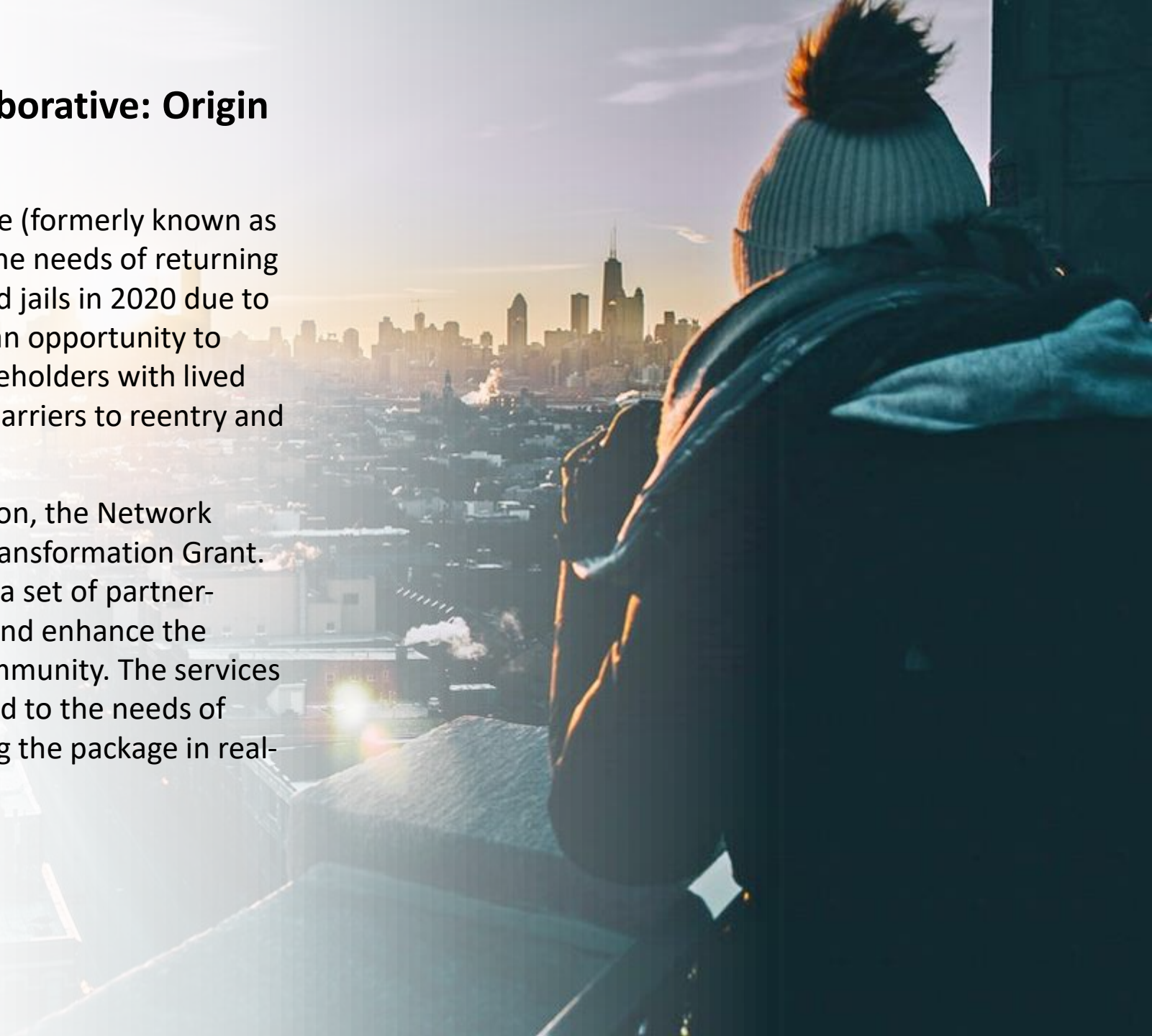
*Facilitating successful reentry for Illinois' returning residents*

An Illinois' Healthcare Transformation Collaboratives

## Supportive Reentry Network Collaborative: Origin and Mission

The Supportive Reentry Network Collaborative (formerly known as PEERR Network) was created to respond to the needs of returning citizens released early from Illinois prisons and jails in 2020 due to covid. The large-scale early release provided an opportunity to both quantify the needs, gain input from stakeholders with lived experience, and identify the roadblocks and barriers to reentry and missing elements in the services available.

Using this experience as a springboard to action, the Network applied for and received a state Healthcare Transformation Grant. Reconfigured as a collaborative, it assembled a set of partner-based services intended to facilitate reentry and enhance the chances for stabilizing the returnee in the community. The services essentially comprise a benefits package geared to the needs of returning citizens. In this phase, we are testing the package in real-world pilot programs.



# Supportive Reentry Network Eligibility

The program is open to individuals released from Illinois Department of Corrections facilities or from detention at Cook County Jail after March 1, 2020, and returning to Chicago or Cook County.

## Participant Referral Sources:

- IDOC and the Cook County Sheriff's Office
- Partner organizations
- Internal referrals from other Safer programs

# Supportive Reentry Network Partners 2022

An aerial view of a city skyline at sunset, with a person's arm and a flag in the foreground. The sun is low on the horizon, casting a warm glow over the city. The flag is partially visible, showing blue and white stripes. The city buildings are silhouetted against the bright sky.

## **AMBULATORY/PRIMARY CARE PARTNERS:**

- Heartland Alliance Health
- Cook County Health

## **SPECIALTY/BEHAVIORAL HEALTH PARTNERS:**

- Healthcare Alternative Systems
- KAM Alliance located in Beverly
- Safer Foundation Counseling & Wellness Center

## **PARTNERS FOCUSED ON SOCIAL DETERMINANTS OF HEALTH:**

- Get to Work (transportation services)
- Legal Council for Health Justice (assistance with Social Security Disability programs)
- Safer Foundation (employment, financial literacy and counseling, housing assistance)
- Transforming Reentry Services/MWIP (assistance with basic documents like birth certificates, state ID)

# Supportive Reentry Network Benefits Package

- Assistance in applying for public benefits
- Assistance in ID restoration
- Health and behavioral health services – facilitated access to appointments, prescription drugs, access to medication assisted treatment
- Assistance in pathways to housing
- Assistance with court mandates and parole requirements
- Help with applications and/challenges with SSI/SSDI
- Assistance with employment, training and job placement
- Access to financial literacy

# Supportive Reentry Network: Reentry Navigators

## Role of Reentry Navigators

- **Reentry Navigator will be the constant point of contact** for participants
- Creates services plan, secures universal consent
- Explains PEERR Network benefits
- Makes referrals through secured email
- Follows up on referral
- Coordinates with CCH team regarding SRNC participant ED visits
- Communicates changes in the services plan to partners
- Communicates with parole and courts
- Integrated staffing

# Supportive Reentry Network Operations

## Supportive Reentry Network Partners

- **Single point of contact** for referrals and scheduling (or more depending upon services)
- Communicates and reaffirms SRNC benefits to enrollees
- Creates treatment plan/services plan/aftercare plan and shares with Reentry Navigator
- Communicates (HIPAA compliant) follow through on plan with Reentry Navigator
- Participates in integrated staffings
- Data & Reporting –reports monthly on metrics

# Supportive Reentry Network Collaborative in a Nutshell

In the demonstration project starting in early 2022, participants will be referred by the Department of Corrections and the Cook County Sheriff's office. The Lived Experience Advisory council will provide input into needs and service delivery. Smart Policy Works will facilitate cross-agency coordination for meeting the transformation grant objectives and services delivery troubleshooting.

The goal is to have results and outcome measure support innovations in policy and systems to disrupt cycling.







## For more information and to get involved:

Barbara Otto, President, Smart Policy Works LLC  
[barbara@smartpolicyworks.com](mailto:barbara@smartpolicyworks.com) | 312.543.5367

Rucha Shastri, AVP Behavioral Health & SRNC Network Director  
[rucha.shastri@saferfoundation.org](mailto:rucha.shastri@saferfoundation.org) | 773.831.9131

Sodiqa Williams, Sr. VP, Safer Foundation, Safer Supportive  
Reentry [sodiqa.williams@saferfoundation.org](mailto:sodiqa.williams@saferfoundation.org)